

# Conferences & Meetings

HALF MOON BAY SLSC



## Conferences & Meetings

HMBSLSC is located on an idyllic section of Port Phillip Bay with expansive views Half Moon Bay and the Red Bluff Cliffs. Members and friends have enjoyed the facility for sporting and social events for over one hundred years.

## Room Hire Only

Our function room is available for casual hire and can accommodate up to 40 people in a classroom or boardroom setting with more in a theatre setting.

Complete with tables, chairs, and a TV to connect your own laptop. Hire the room from just an hour to a whole day.

Your choice of set up is available and catering can be arranged by FOODstyling our contracted caterers. Self catering attracts fees, food handling certificates and other responsibilities. External caterers attract fees and registrations.

## Audio Visual

We have limited AV equipment on hand, you can however bring in your own, but you do need to arrange a time in advance to make sure it is compatible.

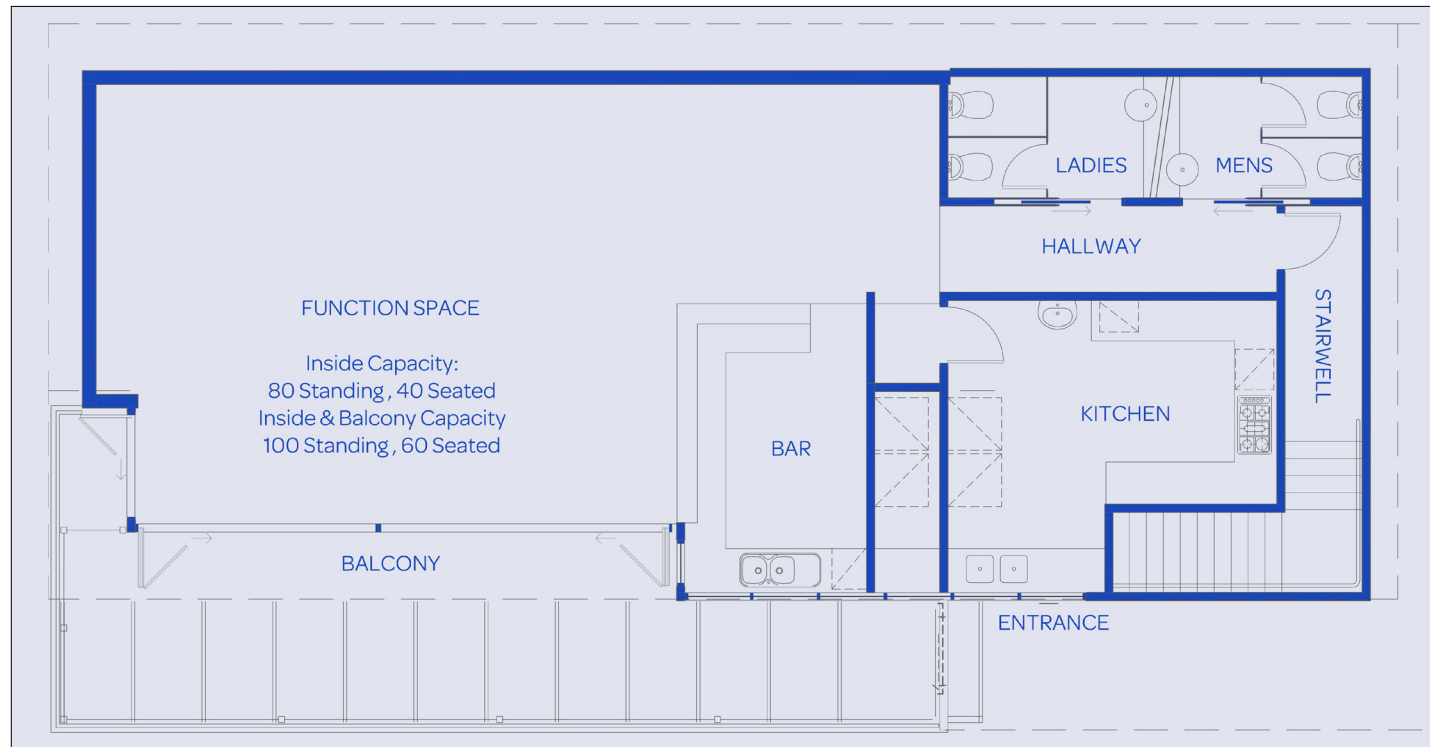
- Flat Screen TV with HDMI connection
  - Sound system
  - Microphone
- Wireless internet connections

## Venue Inclusions

On hand we have:

- 3 Tall Long Tables
- 16 Tall Stools
- 10 Tables
- 50 Chairs

Venue setup is the responsibility of the hirer. The club can offer a set up service charged at \$100 per hour or part there of by prior arrangement.





## Beverages

The club is fully licenced and offers a range of beverages on consumption, a PAYG bar (guests pay), TAB Bar (client pays), or a time limited beverage package arrangement.

Beverage packages are suggested for larger events, a staff surcharge may apply for events with less than 40 guests.

If you have any questions please get in touch with Sally our Venue Manager

## Silver

2 hour duration \$29 p/p  
 3 hour duration \$39 p/p  
 4 hour duration \$48p/p  
 5 hour duration \$55 p/p

Beverages include\*:

Carlton Draught  
 Cascade Light  
 T'Gallant Brut Cuvee  
 Chapel Hill  
 Cab Sav and Shiraz  
 Chapel Hill  
 Pinot Grigio  
 Chardonnay  
 Soft Drinks

Spirits available at \$10 per glass

\*Brands subject to change



## Gold

2 hour duration \$37 p/p  
 3 hour duration \$45 p/p  
 4 hour duration \$55 p/p  
 5 hour duration \$65 p/p

Beverages include\*:

Corona, James Squire Pale Ale  
 Cloak & Dagger Prosecco  
 Oyster Bay Sauvignon Blanc NZ  
 Oyster Bay Chardonnay NZ  
 Mockingbird Hill Shiraz  
 Cat Amongst The Pigeons Cab Sav  
 San Pellegrino Sparkling,  
 Soft Drinks

Spirits available at \$10 per glass

Other wines available by request

## Catering

Our in-house caterers FOODstyling offer a delightful range of food experiences, to suit all budgets.

Sally our Venue Manager & Caterer will be able to provide you with more details  
 email: [functionbookings@halfmoonbayslsc.com.au](mailto:functionbookings@halfmoonbayslsc.com.au)

Self catering attracts fees and food handling certificates.

External caterers attract fees and registrations.

## BOOKING DETAILS

NAME OF ORGANISATION

TYPE OF FUNCTION

CONTACT NAME  CONTACT NUMBER

EMAIL ADDRESS

CONTACT ADDRESS

## FUNCTION DETAILS SECURITY DEPOSITS

DATE OF PROPOSED FUNCTION

START TIME

ESTIMATED NUMBER OF GUESTS

END TIME

OTHER DETAILS

### Security deposits to be PAID to:

FOODstyling  
BANK: BENDIGO BANK  
BSB: 633 000  
ACC: 187 361 407

### Security deposits to be REFUNDED to (your details):

BANK: \_\_\_\_\_  
BSB: \_\_\_\_\_  
ACC: \_\_\_\_\_

## HMBSLSC MEMBERS

ARE YOU A CURRENT MEMBER OF HALF MOON BAY SURF LIFE SAVING CLUB?  YES  NO

PRICE FOR MEMBERS WILL BE DISCUSSED AND DECIDED BY THE HALF MOON BAY SLSC EXECUTIVE COMMITTEE.

## CATERING REQUIREMENTS & AV REQUIREMENTS

MORNING/AFTERNOON TEA

MICROPHONE

LIGHT LUNCH

OTHER AV EQUIPMENT

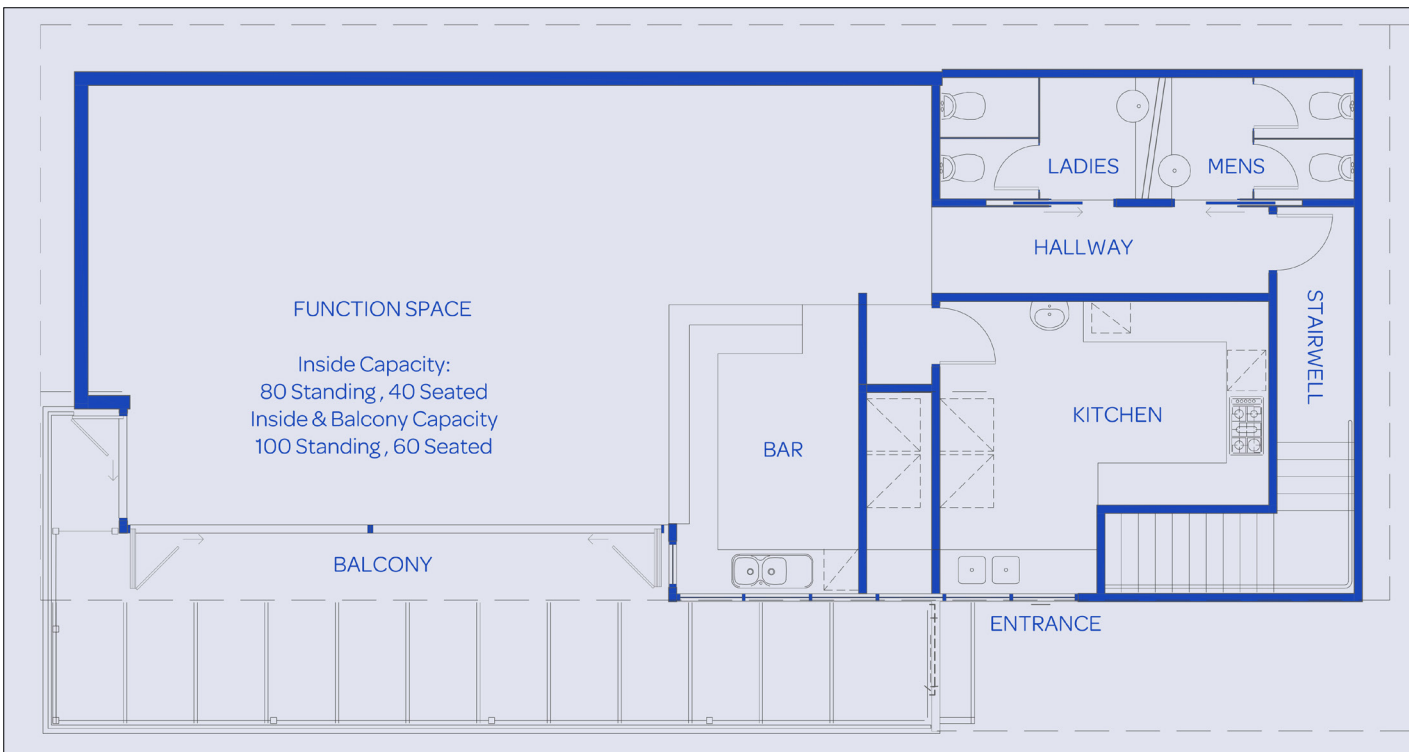
TEA/COFFEE

SPEAKERS

OPEN BAR

FLAT SCREEN TV

**NOTES:**



## Floor Plan

The layout of the function area at Half Moon Bay SLSC is pictured above.

## Facility and Furniture

On hand we have:

- 3 Tall Long Tables
- 16 Tall Stools
- 10 Tables
- 50 Chairs

Venue setup is the responsibility of the hirer. The club can offer a set up service charged at \$100 per hour or part there of by prior arrangement.

## Audio Visual

We have limited AV equipment on hand, you can however bring in your own, but you do need to arrange a time in advance to make sure it is compatible.

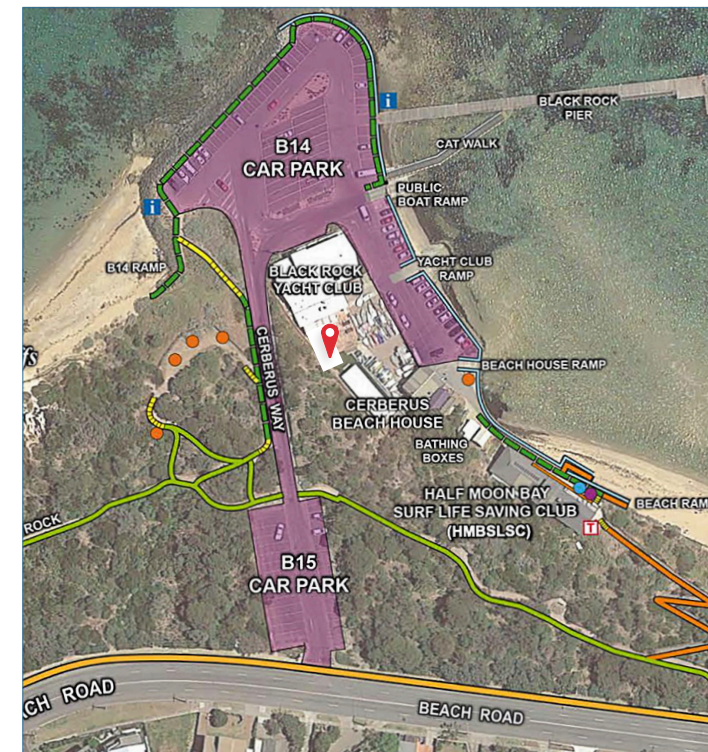
- Flat Screen TV with HDMI connection
- Sound system
- Microphone
- Wireless internet connection connections

## N.B.

A bond of \$500 is required to book the venue and will be held in trust against any misfortunate damage that may arise. A \$1000 bond applies to 21st's.

Bookings will be confirmed with your bond deposit and a signed copy of the Venue Hire Booking Form which will get sent to you by our Venue Manager.

In the event of cancellation outside of our control, 50% of the bond will be withheld, the balance refunded.



## How to get to HMBSLSC

Half Moon Bay SLSC is located at 26 Cerberus Way, Black Rock VIC 3193.

The map above shows shaded pink car parking areas. There is ample parking available. Bayside residents can park free by displaying their permit, minimal charges apply for

## Transport & Parking

Taxi 13CABS and UBER

Forshore: Permit Parking & Paid Parking options  
Beach Road & Side Streets, then you can walk down

## Bookings

To enquire about availability or to inspect the venue please contact Sally our Venue Manager M 0409 66 88 12, email: [functionbookings@halfmoonbayslsc.com.au](mailto:functionbookings@halfmoonbayslsc.com.au)



Half Moon Bay SLSC  
26 Cerberus Way, Black Rock VIC 3193  
[functionbookings@halfmoonbayslsc.com.au](mailto:functionbookings@halfmoonbayslsc.com.au)  
[www.mlsc.com.au](http://www.mlsc.com.au)